


Map Showing Surface Coal Mines in Perry County, Indiana

Explanation

-  Surface Mine
- 200000** Mine Identification Number

Map Description

This map shows the locations of surface coal mines in Perry County, Indiana, which includes updated surface mine locations. Updated mine maps are collected annually from the Indiana Department of Natural Resources, Division of Reclamation.

Other mined areas shown on this map were adapted from information compiled by the Indiana Geological Survey (IGS) in the mid-1980s and published as the IGS Coal Map series. Original information collected for the Coal Maps was compiled from a variety of sources including IDNR Division of Reclamation maps, Annual State Geologists' Reports, mining company records, archived geologic reports, geologists' field notes, and several series of published maps.

Additional Information

All mine data shown on this map are organized in a Geographic Information System (GIS) using ArcGIS software of the Environmental Systems Research Institute (ESRI) on the Windows platform. Scale of source maps ranges from 1:4,800 to 1:100,000. All maps were digitized and then transformed using coordinates generated from 1:24,000-scale U.S. Geological Survey 7.5-minute quadrangle maps.

Some of the mined areas shown on this map were adapted from information compiled by the Indiana Geological Survey (IGS) in the mid-1980s and published as the IGS Coal Map series. Original information collected for the Coal Maps was compiled from a variety of sources including IDNR Division of Reclamation maps, Annual State Geologists' Reports, mining company records, archived geologic reports, geologists' field notes, and several series of published maps.

Data Availability

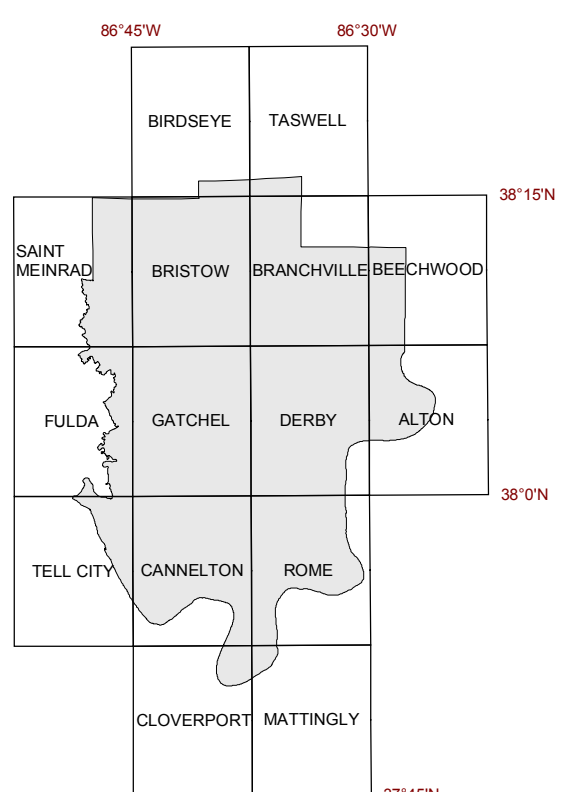
Paper and digital copies of this map are available for purchase through the Publication Sales Office of the Indiana Geological Survey, Indiana University. Requests for specific mine information should be directed to the Coal and Industrial Minerals Section, Indiana Geological Survey.

611 North Walnut Grove
Bloomington, IN 47405
Phone (812) 855-7636
Fax (812) 855-2862
e-mail IGSINFO@indiana.edu
URL <http://igs.indiana.edu>

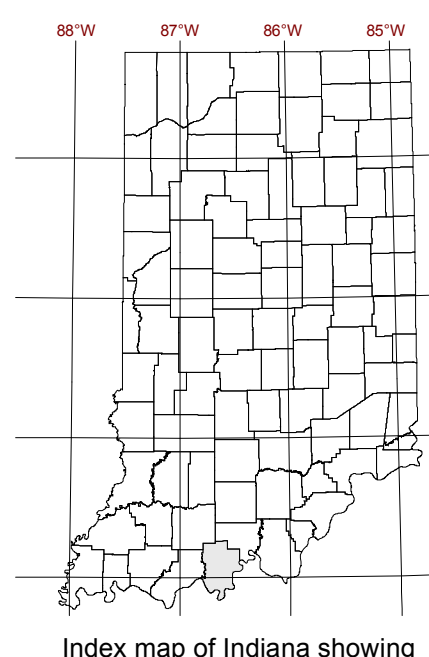
Some mine locations are approximate and incomplete. Please provide additions/corrections to Head, Coal and Industrial Minerals Section, Indiana Geological Survey.

Disclaimer

This Miscellaneous Map was compiled by Indiana University, Indiana Geological Survey, using data believed to be accurate; however, a margin of error is inherent in all maps. This product is distributed "AS-IS" without warranties of any kind, either expressed or implied, including but not limited to warranties of suitability of a particular purpose or use. There is no attempt in either the design or production of this map to define the limits or jurisdiction of any federal, state, or local government. This map is intended for use only at the scale of 1:63,360 or smaller. A detailed on-the-ground survey and historical analysis of a single site may differ from this map.



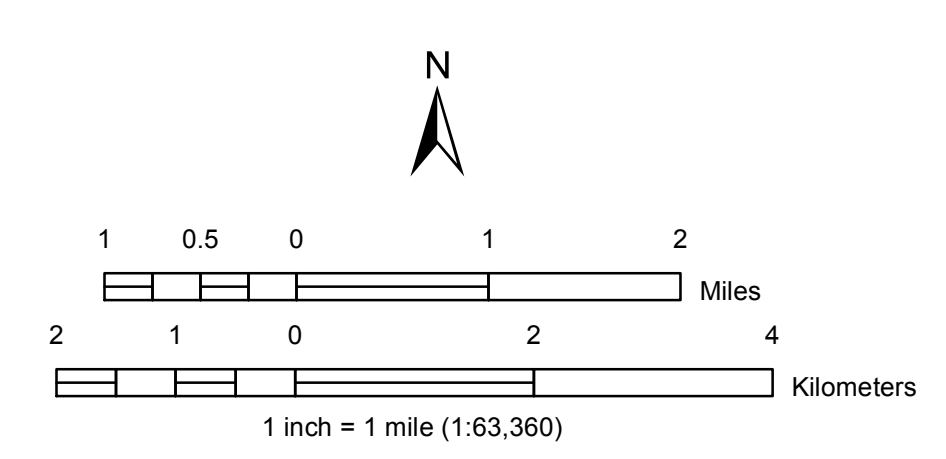
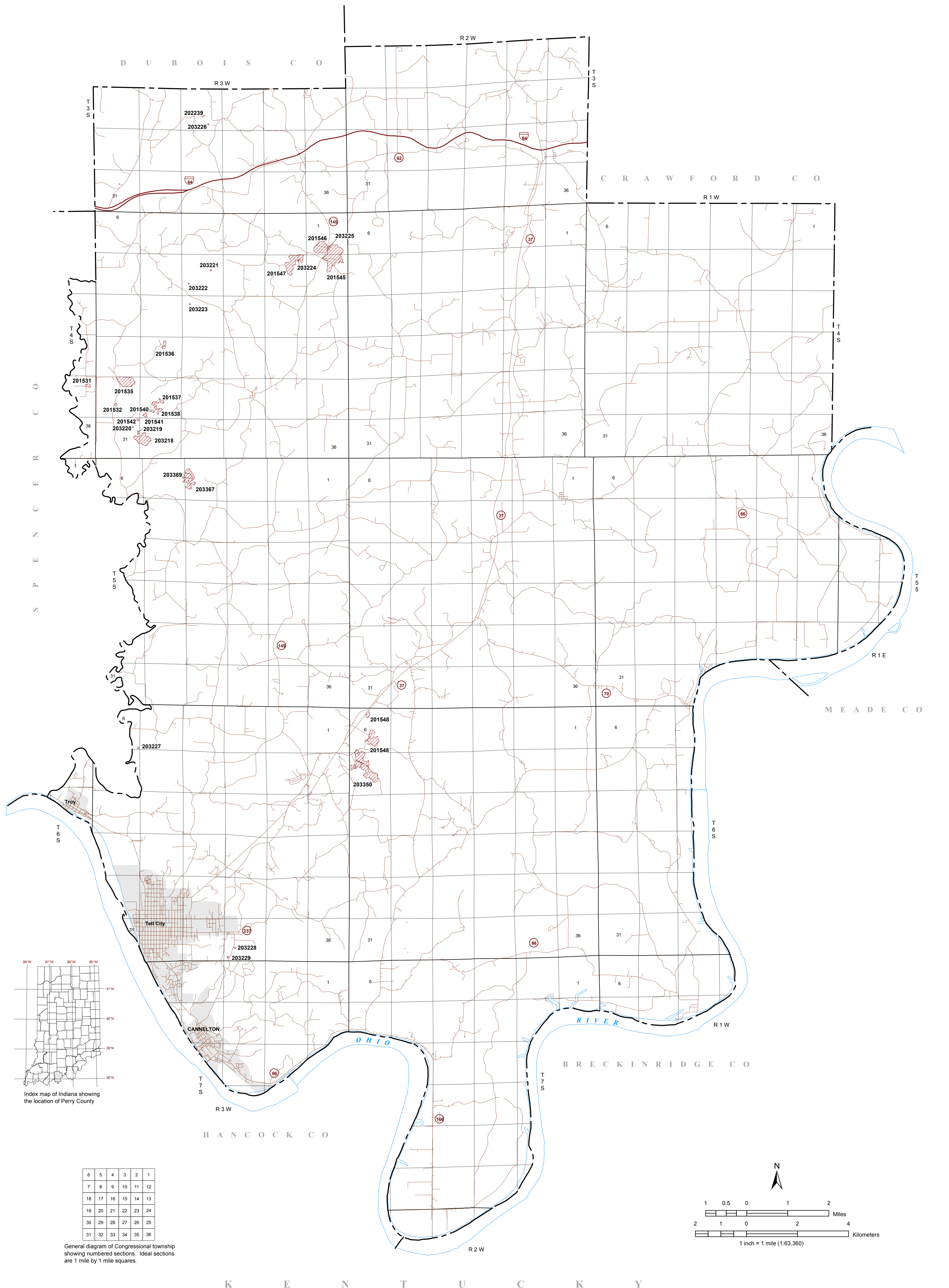
Index map of Perry County showing U.S. Geological Survey 7 1/2-minute topographic quadrangle map names



Index map of Indiana showing the location of Perry County

6	5	4	3	2	1
7	8	9	10	11	12
13	14	15	16	17	18
19	20	21	22	23	24
25	26	27	28	29	30
31	32	33	34	35	36

General diagram of Congressional township showing numbered sections. Ideal sections are 1 mile by 1 mile squares.



CMIS
Indiana Coal Mine
Information System



Land grid, county boundary, water, and towns digitized from 1:24,000 scale USGS topographic maps. Roads adapted from 2000 TIGER line files (intended scale 1:100,000). Map projection is Universal Transverse Mercator, Zone 16. Horizontal map datum is North American Datum 1983.

Coal Mine data compilation complete through December, 2011. Compiled by Becky Meyer and Licia Weber December, 2011.